



Technology From another World

## ALIEN WARP<sup>∞</sup> HELP FILES



HARDWARE

### Biometric Terminals

#### 1. Fingerprint Scanner (Interior & Exterior)

##### FINGERPRINT SCANNER SPECIFICATIONS

Dimensions – 6.5cm(W) x 11cm(H) x 3.5cm(D)

Weight – 240g

POE

RJ45 Cable Connectivity

##### FEATURES

Real-time data

Ethernet

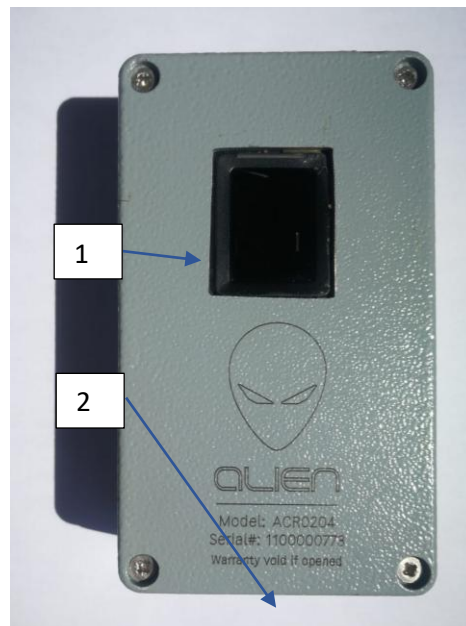
Easy Protocol

Set-up

Bio-metric Security

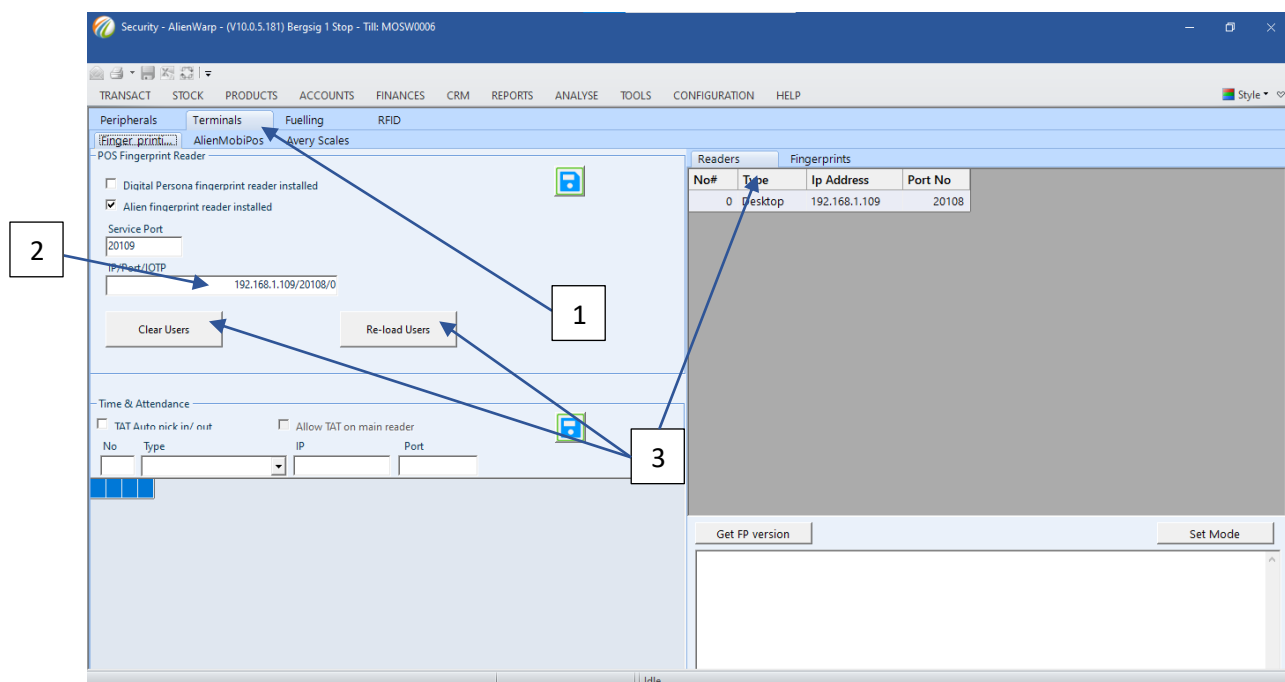
Easy to troubleshoot

## Wired Pump controller hardware troubleshooting



- 1) If the scan screen is not luminous check your 12V POE cable connection.
- 2) Check that your RJ45 cable is correctly inserted into the thumbprint reader device socket.

## Wired Pump controller software set-up



- 1) Click on the configuration menu and then click on the devices module, click on the terminals sub module to display the POS Fingerprint reader configuration window.

- 2) Enter the Service Port and IP/Port/IOTP number and click the save button to load a new POS fingerprint reader.
- 3) Clear or Re-load the list of readers as displayed on the right in the sub-module Readers window.

Readers					
Fingerprints					
Type	ID	Name	P1	P2	Rdrs
Staff	252	Ryan Swain	X		
Staff	254	AA REG DE KOCK	X		
Staff	255	Nando Moller	X		
Staff	250	ALRIC blue	X		
Staff	260	Andre Kiona	X		

- 4) Click on the Fingerprint sub-module tab to display the fingerprints loaded.