



Technology From another World

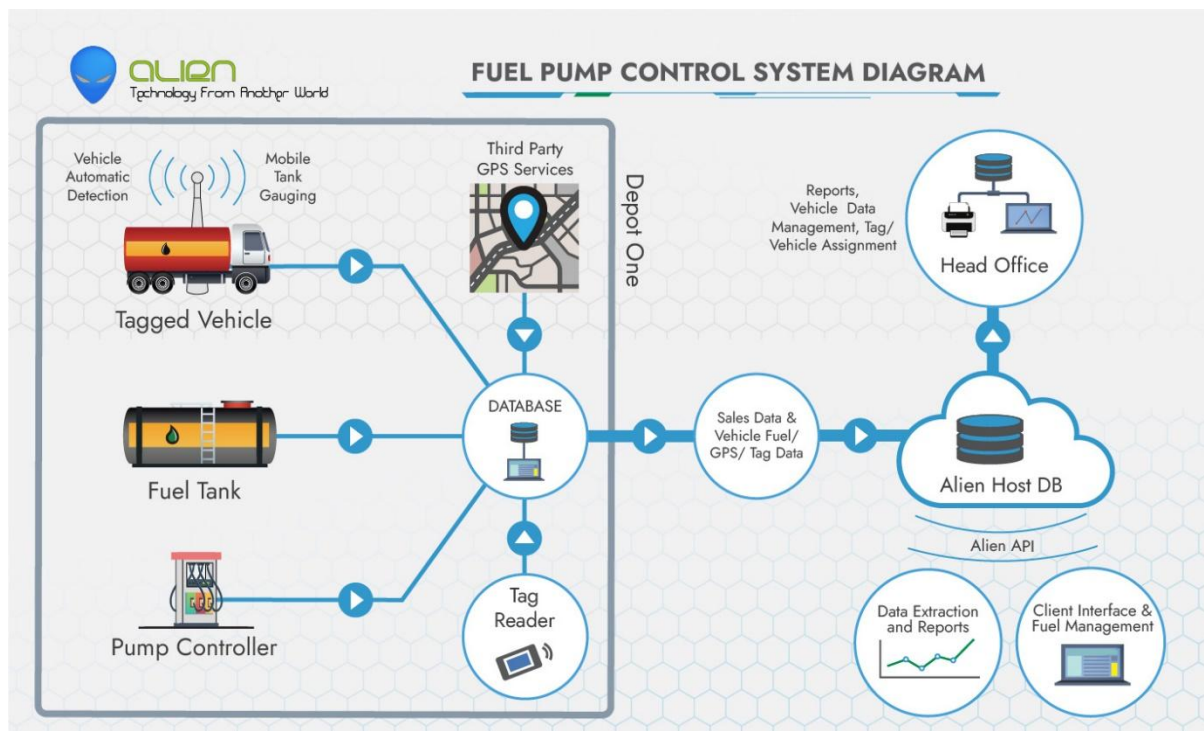
ALIEN WARP[∞] HELP FILES

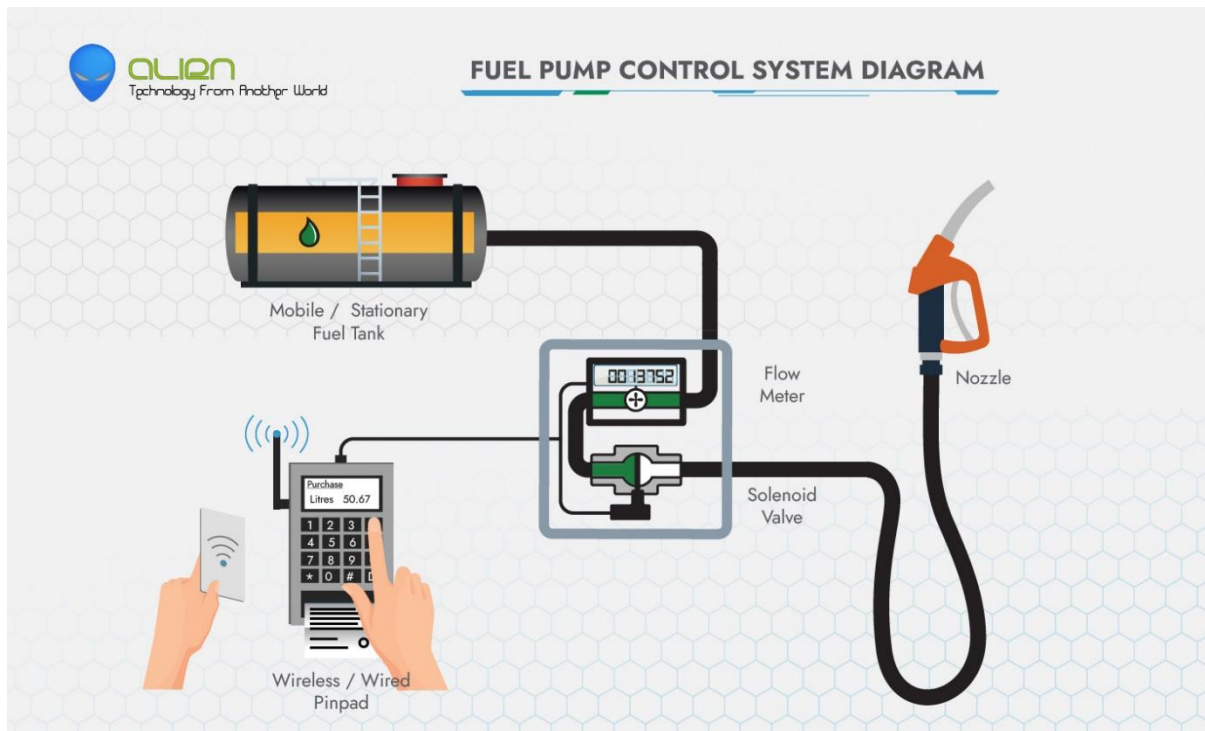


HARDWARE

Fuel Terminals

1. Pump Controllers
2. Wifi Pump Controllers
3. Tank Gauges





Wired Pump Controller Troubleshooting

WIRED PUMP CONTROLLER SPECIFICATIONS

RS485 connectivity

TCP/IP connectivity

RJ45 connectivity

Dimensions – 3.9cm(W) x 8.7cm(H) x 2.3cm(D)

Weight – 40g

FEATURES

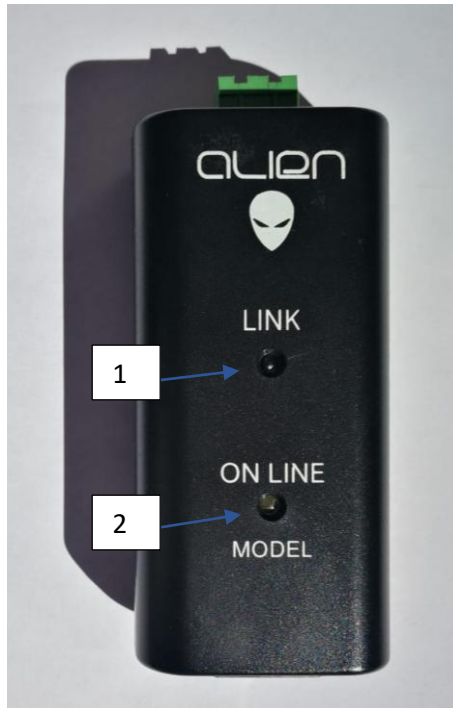
Real-time data

Ethernet

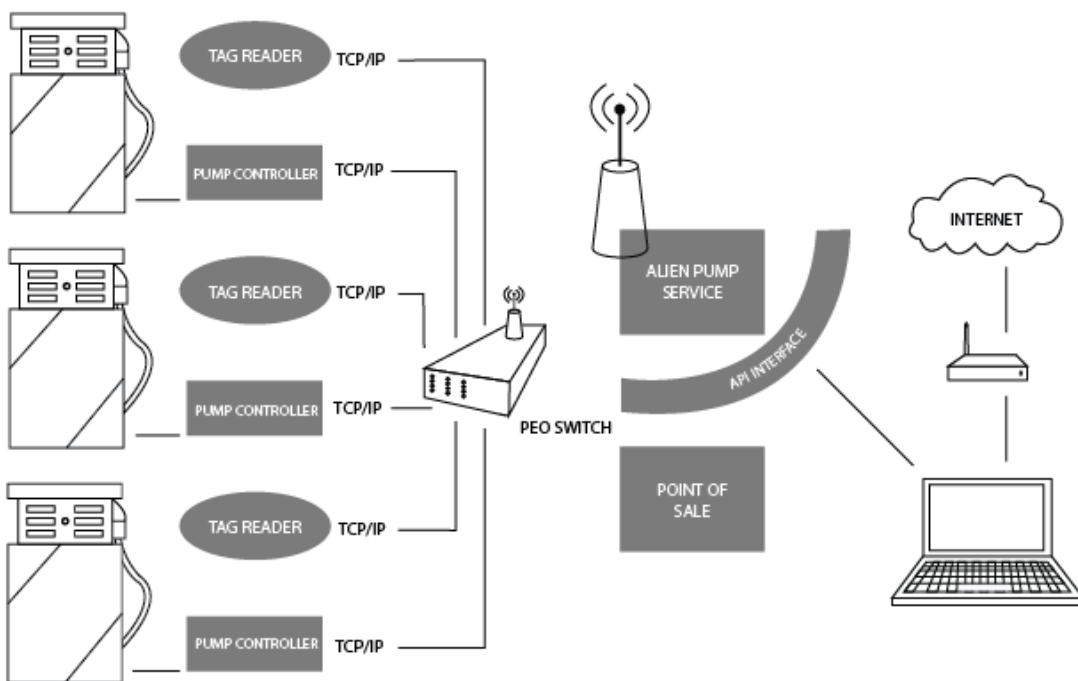
Easy Protocol

Set-up

Easy to troubleshoot



- 1) If your power indicator LED RX TX light is no longer luminous and pulsating, check your 12V POE switch.
- 2) If your communication indicator LED light is no longer luminous, check if your RJ45 cable is firmly plugged into your wired pump controller into your router.



The Alien Pump Service is a stand-alone Windows service that serves as intermediary, gateway and communications director to the POS installations. APC's are particular to the type of pump it is connected to.



Pump controller configuration

Devices - AlienWarp - (V10.0.3.181) Bergsig 1 Stop - Till: MOSW0006

TRANSACTION STOCK PRODUCTS ACCOUNTS FINANCES CRM REPORTS ANALYSE TOOLS CONFIGURATION HELP

Peripherals Terminals fuelling RFID

Pump controller

Alien APC

Max Pre-Auth (lit) 0

Monitor mode Use POS Price Sync Tank Data Alerts

Demo mode Reports Only Manual Sales

Balance checks Temperature compensate

Client IP/Name 127.0.0.1 Port 6465 Log Errors

Stack size 2 Excl. front sale

Pump# Hose Grade Group Protocol IP/Port RS232

Pump#	Hose	Grade	Group	Protocol	IP/Port
1	1	Diesel 50	1	Prowalco SPD6	192.168.1.189/20108
2	1	ULP 95	2	Tokheim	192.168.1.190/20108
3	1	Diesel 50	1	Dresser Wayne	192.168.1.195/20108
3	2	ULP 95	2	Dresser Wayne	192.168.1.195/20108
3	3	Regular	3	Dresser Wayne	192.168.1.195/20108
4	1	Diesel 50	1	Dresser Wayne	192.168.1.195/20108
4	2	ULP 95	2	Dresser Wayne	192.168.1.195/20108
4	3	Regular	3	Dresser Wayne	192.168.1.195/20108

Tagging & Authorising

General Net Tags Legacy FingerTags TFN eFuel Self Help eGazz

Auto authorise - no tagging

Allow tag registration in Transact

Account tags require a jockey tag also

One jockey tag can authorise only one pump at a time

One client tag can authorise only one pump at a time

Re-use validity 0 in minutes

Controller Connection

Server Name Database Name

MSQL2019 MOSW_pos

Username Password

MOSW MOSWuser

Controller Till's Code

Do e-totals on this till Use remote totals

Tanks Tank Gauging

Tank#	Name	Grade	Shape	Group

Set grade price

Grade Name

Date 06 November 2024

Time 10:57:44

Price Cost

- 1) Select the fuel pump controller type in the dropdown selection menu.
- 2) Enter the client IP/Name and port number, then click the save button to capture the changes.

WIFI PUMP CONTROLLER SPECIFICATIONS

RS485 connectivity

TCP/IP connectivity

RJ45 connectivity

Dimensions – 3.9cm(W) x 8.7cm(H) x 2.3cm(D)

Weight – 41g

FEATURES

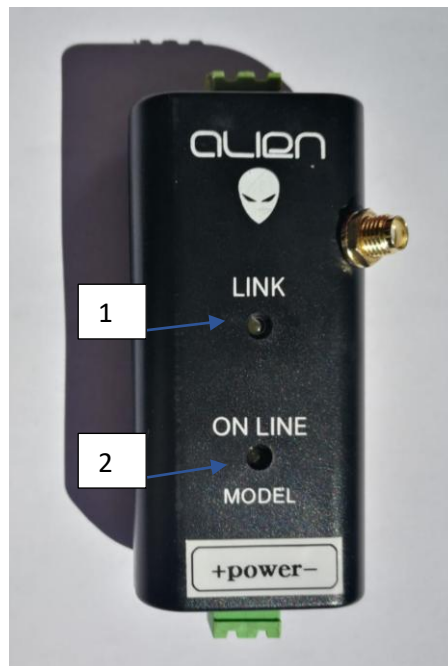
Real-time data

Ethernet

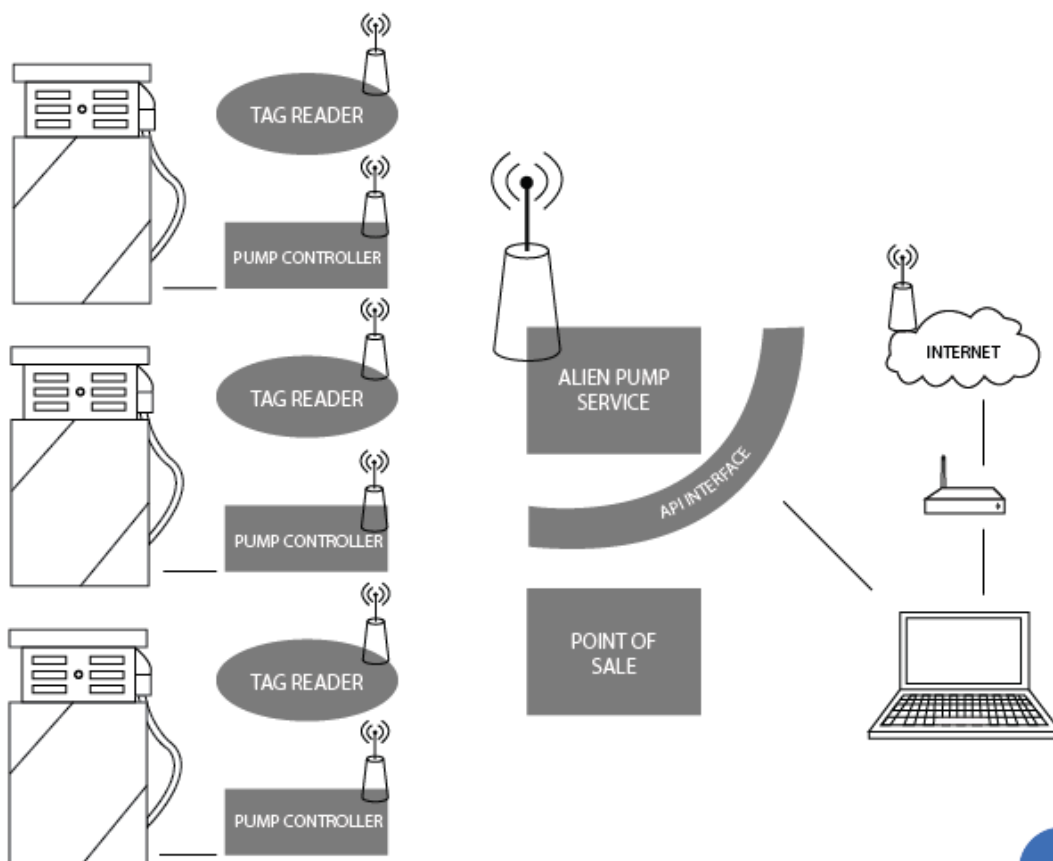
Easy Protocol

Set-up

Easy to troubleshoot



- 1) If your power indicator LED RX TX light is no longer luminous and pulsating, check your 12V POE switch.
- 2) If your communication indicator LED light is no longer luminous, check if your RJ45 cable is firmly plugged into your wired pump controller into your router.

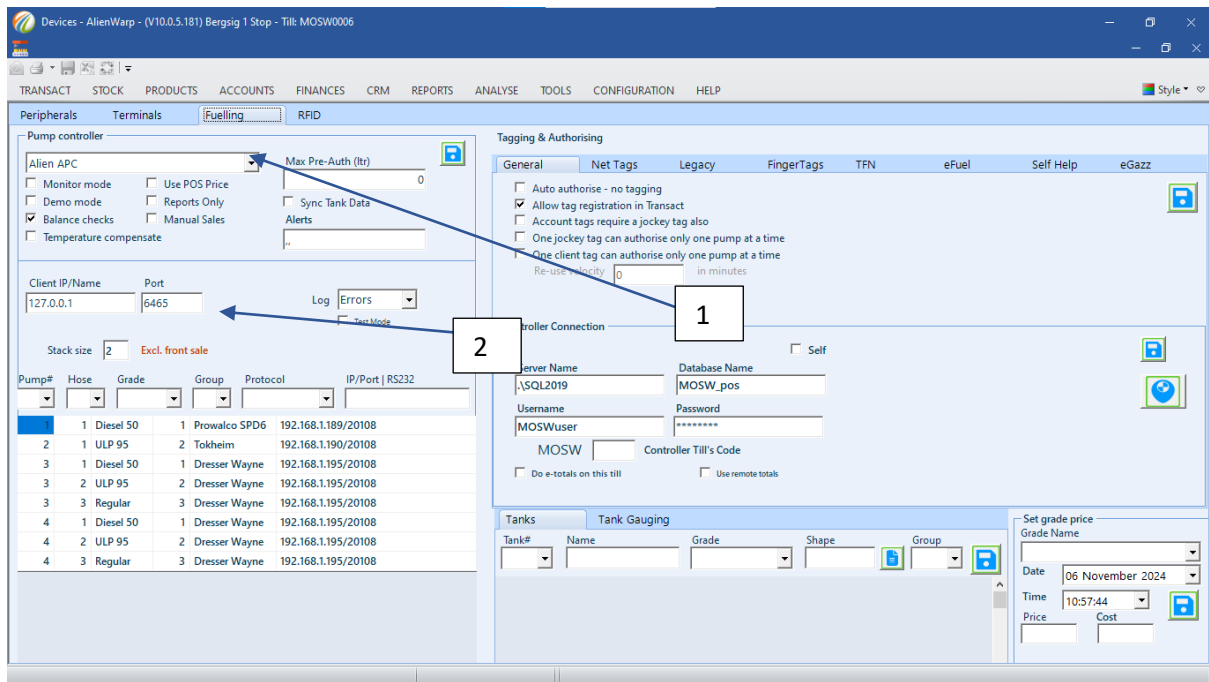


The Alien Pump Service is a stand-alone Wi9ndows service that serves as intermediary, gateway and communications director to the POS installations.

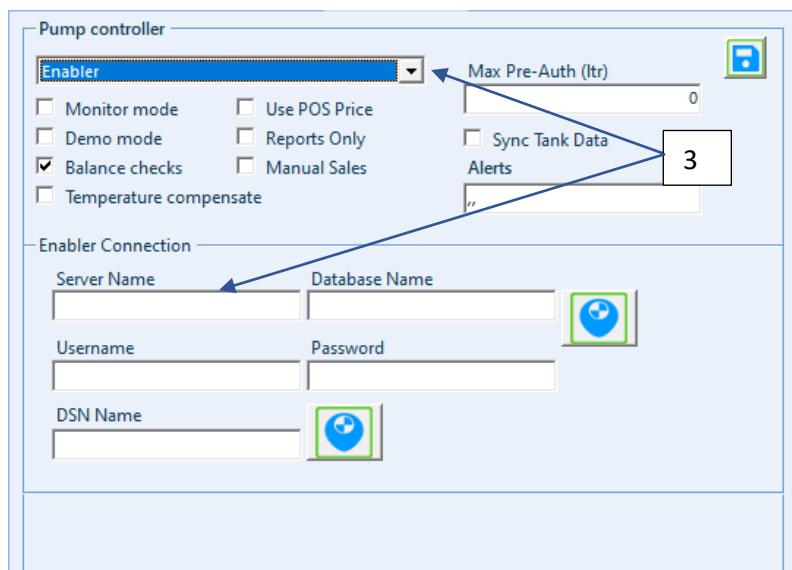
APCs are particular to the type of pump it is connected to. Currently Prowalco has been tried, tested and running in the field with the Alien POS system.

An APC for Tokheim has been completed and software is under development.

RS485 protocols (such as Lang Geng) are planned for the near future.



- 1) Select the fuel pump controller type in the dropdown selection menu.
- 2) Enter the client IP/Name and port number, then click the save button to capture the changes.



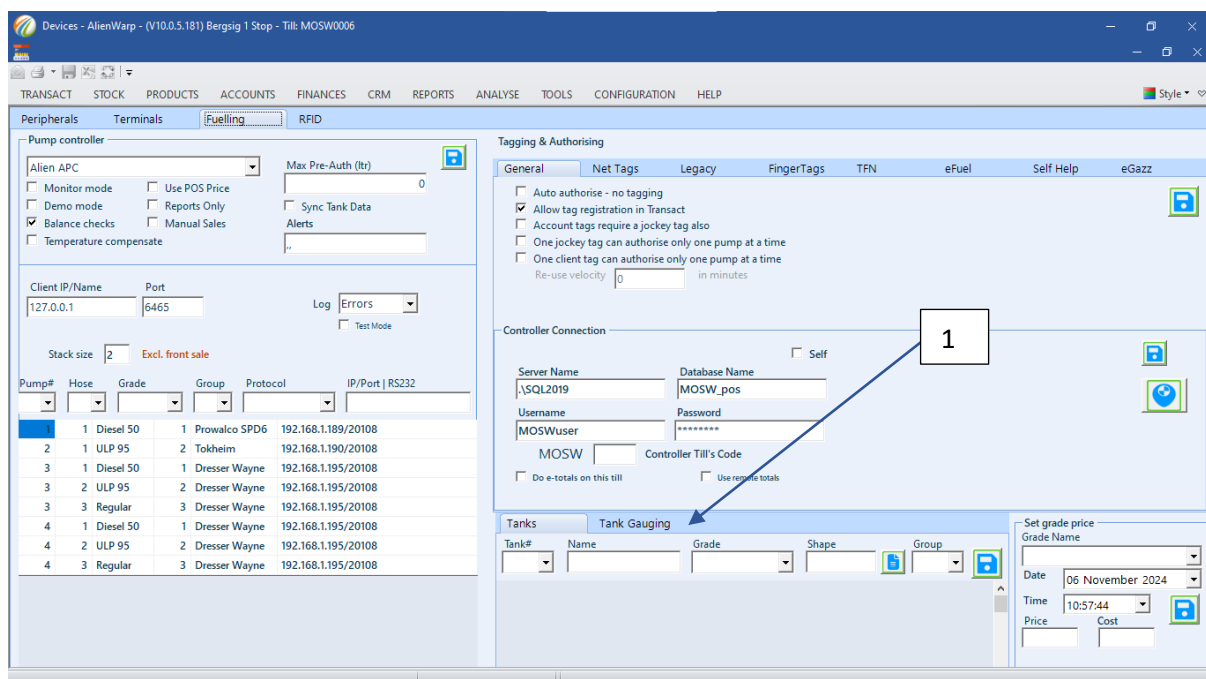
- 3) When selecting the Enabler Wifi pump controller, enter the Enabler connection details, server name, database name, username, password, and, DSN name.

4. Tank Gauges



- 1) Ensure there is no Bluetooth or wifi frequency interfering with your dielectric current.
- 2) Ensure your five copper wires are clean, firmly connected and that the socket is plugged in correctly.
- 3) Ensure the fuel gauge (level transducer) is fully submerged and the nozzle is laying on the floor surface area of the tank.

WARNING | Reverse connection of red, green/blue wires will burn out the product. Do not open the cap or touch the membrane inside.



1) Select the Tank Gauging